

| AIR DIFFUSION SCHEDULE | | | | | | | | | |
|------------------------|------------------------|------|-------------------|-------------------|------|--------|-------------|-----|-------|
| ITEM | TYPE | MAKE | NECK SIZE (W x H) | FACE SIZE (W x H) | BLOW | DAMPER | FLEX Ø (mm) | QTY | NOTES |
| E1 | - | - | - | - | - | - | PER PLAN | 14 | |
| S1 | SQ SUPPLY AIR DIFFUSER | - | - | - | - | - | PER PLAN | 3 | |
| S2 | SQ SUPPLY AIR DIFFUSER | - | - | - | - | - | PER PLAN | 46 | |
| S3 | SQ SUPPLY AIR DIFFUSER | - | - | - | - | - | PER PLAN | 2 | |

| FAN COIL UNIT SCHEDULE | | | | | | | | | | | | | |
|------------------------|----------|------------|--------------|---------------------|--------------------|-----------|----------------|---------------|------------|------------|-----------|--------|-------|
| ITEM | LOCATION | MAKE | MODEL | CAPACITY TOTAL (kW) | CAPACITY SENS (kW) | Db/Wb | AIR FLOW (L/S) | OUT/AIR (L/S) | R/A SPIGOT | S/A SPIGOT | MASS (kg) | CU No. | NOTES |
| FCU-1 | - | mitsubishi | PEA-RP100GAA | 9.54 | 8.66 | 24.6/17.6 | - | 20 | 1102X330 | 921X250 | 63 | - | |
| FCU-2 | - | mitsubishi | PEAD-RP71JAA | 6.91 | 5.85 | 25.4/18.0 | - | 20 | - | - | 29 | - | |
| FCU-3 | - | mitsubishi | PEA-RP100GAA | 9.85 | 9.16 | 26.2/18.3 | - | 20 | 1102X250 | 921X250 | 63 | - | |
| FCU-4 | - | mitsubishi | PEAD-RP71JAA | 6.91 | 5.85 | 25.4/18.0 | - | 20 | - | - | 29 | - | |
| FCU-5 | - | mitsubishi | PEA-RP125GAA | 11.86 | 10.70 | 24.3/17.5 | - | 20 | 1102X330 | 921X250 | 63 | - | |
| FCU-6 | - | mitsubishi | PEA-RP100GAA | 9.73 | 8.99 | 25.6/18.0 | - | 20 | 1102X330 | 921X250 | 63 | - | |
| FCU-7 | - | mitsubishi | PEA-RP100GAA | 9.73 | 8.99 | 25.6/18.0 | - | 450 | 1102X330 | 921X250 | 63 | - | |
| FCU-8 | - | mitsubishi | PEA-RP100GAA | 9.73 | 8.99 | 25.6/18.0 | - | 450 | 1102X330 | 921X250 | 63 | - | |
| FCU-9 | - | mitsubishi | PEA-RP125GAA | 11.86 | 10.70 | 25.4/17.5 | - | 120 | 1102X330 | 921X250 | 63 | - | |
| FCU-10 | - | mitsubishi | PEA-RP100GAA | 9.73 | 8.91 | 25.4/18.0 | - | 40 | 1102X330 | 921X250 | 63 | - | |
| FCU-11 | - | mitsubishi | PEA-RP100GAA | 9.73 | 8.91 | 25.4/18.0 | - | 20 | 1102X330 | 921X250 | 63 | - | |
| FCU-12 | - | mitsubishi | PEA-RP100GAA | 9.73 | 8.91 | 25.4/18.0 | - | 280 | 1102X330 | 921X250 | 63 | - | |

| OUTDOOR UNIT SCHEDULE | | | | | | | | | |
|-----------------------|----------|------------|----------------|--------|---------------|----------|--------------|-----------|-------|
| ITEM | LOCATION | MAKE | MODEL | REFRIG | CAPACITY (kW) | AMB (C°) | VOLTS/PH/AMP | MASS (kg) | NOTES |
| CUG.1 | ROOF | mitsubishi | PUHZ-RP100VKA2 | | 10.0 | | | 118 | |
| CUG.2 | ROOF | mitsubishi | PUHZ-RP71VHA5 | | 7.10 | | | 67 | |
| CUG.3 | ROOF | mitsubishi | PUHZ-RP100VKA2 | | 10.0 | | | 118 | |
| CUG.4 | ROOF | mitsubishi | PUHZ-RP71VHA5 | | 7.10 | | | 67 | |
| CU1.1 | ROOF | mitsubishi | PUHZ-RP125VKA2 | | 12.5 | | | 118 | |
| CU1.2 | ROOF | mitsubishi | PUHZ-RP100VKA2 | | 10.0 | | | 118 | |
| CU1.3 | ROOF | mitsubishi | PUHZ-RP100VKA2 | | 10.0 | | | 118 | |
| CU1.4 | ROOF | mitsubishi | PUHZ-RP100VKA2 | | 10.0 | | | 118 | |
| CU2.1 | ROOF | mitsubishi | PUHZ-RP125VKA2 | | 12.5 | | | 118 | |
| CU2.2 | ROOF | mitsubishi | PUHZ-RP100VKA2 | | 10.0 | | | 118 | |
| CU2.3 | ROOF | mitsubishi | PUHZ-RP100VKA2 | | 10.0 | | | 118 | |
| CU2.4 | ROOF | mitsubishi | PUHZ-RP100VKA2 | | 10.0 | | | 118 | |

| FAN SCHEDULE | | | | | | | | | | |
|--------------|---------------------|---------|------------------|----------------|-----------|-------------|---------------|--------------|----------------------|-------|
| ITEM | LOCATION | MAKE | MODEL | AIR FLOW (L/S) | DUTY (Pa) | VOLTS/PH/Hz | SPEED CONTROL | DAMPER MODEL | CONTROL | NOTES |
| EF1.0 | CAR PARK EXHAUST | FANTECH | AP0714AA10/13 | 2010 | 280 | 415/3/50 | - | - | REF NOTE 1 | |
| EF3.0 | G.F. TOILET EXHAUST | FANTECH | RIL-200SW HI | 230 | 100 | 240/1/50 | - | - | TIME CLOCK | |
| EF4.0 | 1ST FL TOILET | FANTECH | VM-250L | 260 | 110 | 240/1/50 | - | - | TIME CLOCK | |
| EF5.0 | 2ND FL TOILET | FANTECH | MME314/2 | 290 | 110 | 240/1/50 | - | - | TIME CLOCK | |
| OAF1 | G.F. WEST | FANTECH | TD-500/150SIL LO | 80 | 80 | 240/1/50 | - | - | INTERLOCKED WITH A/C | |
| OAF2 | G.F. EAST | FANTECH | TD-500/150SIL HI | 130 | 80 | 240/1/50 | - | - | INTERLOCKED WITH A/C | |
| OAF3 | 1ST FL WEST | FANTECH | TD-500/150SIL HI | 130 | 80 | 240/1/50 | - | - | INTERLOCKED WITH A/C | |
| OAF4 | 1ST FL EAST | FANTECH | TD-500/150SIL HI | 130 | 80 | 240/1/50 | - | - | INTERLOCKED WITH A/C | |

| DOOR GRILLE SCHEDULE | | | | |
|----------------------|------|--------------|-----|-------|
| ITEM | MAKE | SIZE (W x H) | QTY | NOTES |
| DG1 | | 600X600 | 4 | |
| DG2 | | 600X300 | 2 | |
| UC | | | 3 | |

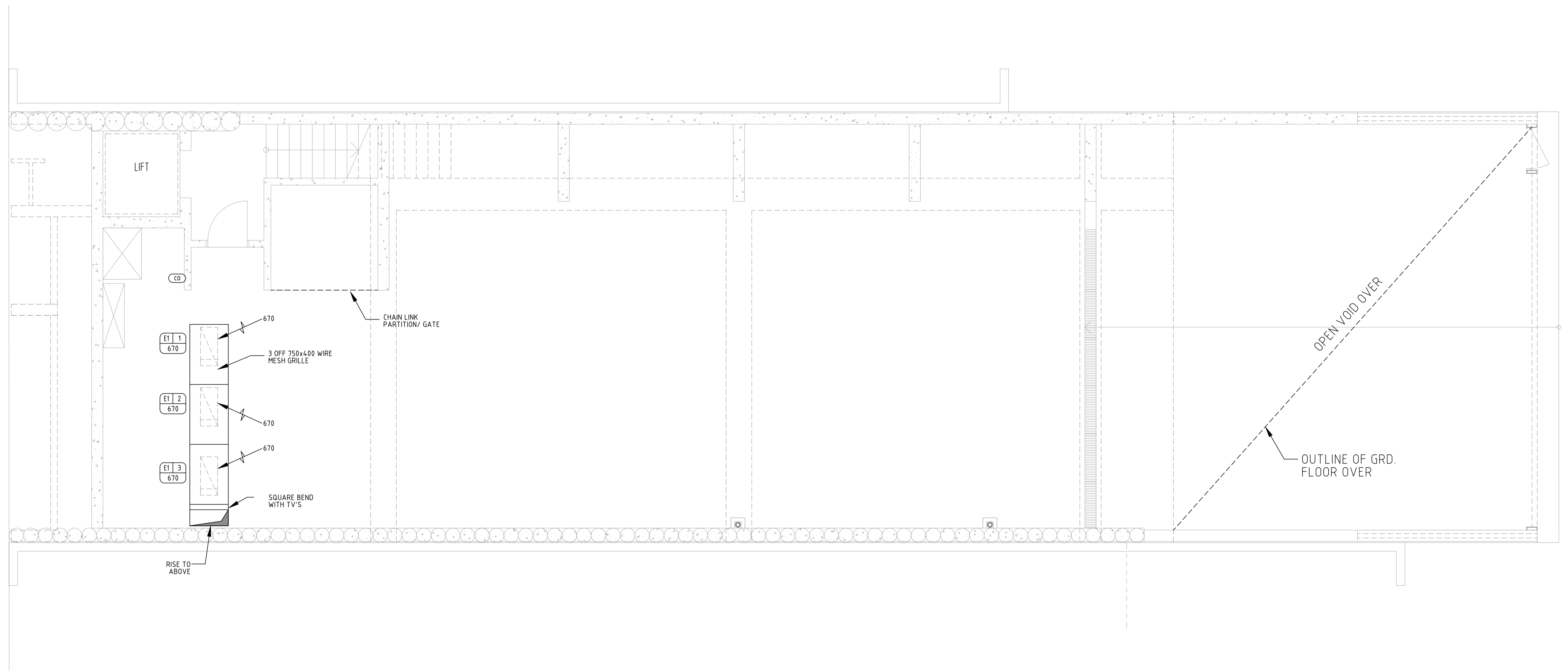
| LEGEND | |
|----------|--|
| DUCTWORK | |
| | UN-INSULATED SHEET METAL DUCT - VENTILATION |
| | 50mm INTERNALLY INSULATED DUCTWORK ANSJ34 |
| | 75mm INTERNALLY INSULATED DUCTWORK ANSJ37 |
| | 100mm INTERNALLY INSULATED DUCTWORK BOX |
| | SUPPLY/OUTSIDE AIR DUCTWORK DROPPER |
| | RETURN/EXHAUST AIR DUCTWORK DROPPER |
| | SUPPLY/OUTSIDE AIR DUCTWORK RISER |
| | RETURN/EXHAUST AIR DUCTWORK RISER |
| | FLEXIBLE DUCTWORK TO BE ACOUSTICALLY LINED, PLAN FLEX TO EXHAUST SYSTEMS |
| | SPIGOT C/W BUTTERFLY DAMPER & INSULATED FLEXIBLE DUCT |
| | FLEXIBLE DUCT CONNECTION |
| | NON RETURN DAMPER |
| | SET UP INDIRECTION OF AIR FLOW |
| | SET DOWN INDIRECTION OF AIR FLOW |
| | AIR CONDITIONER CONTROL MOUNTED 1500 AFFL |
| | TEMPERATURE SENSOR |
| | CEILING ACCESS PANEL 650X650 SUPPLIED & INSTALLED BY BUILDER |
| | AIR FLOW DIRECTION |
| | MECHANICAL SERVICES SWITCH BOARD |
| | POWER SUPPLY & ISOLATING SWITCH BY OTHERS ADJACENT CONDENSING UNITS |
| | TUNDISH (BY HYDRAULIC TRADE) |
| | DOOR GRILLE SUPPLIED BY MECH CONTRACTOR INSTALLED BY BUILDER |

NOTES

- ALL DUCT SIZES SHOWN ARE OVERALL SHEETMETAL SIZE.
- ALL DUCTING TO COMPLY WITH AS/NZ4254 & SMACNA.
- TAPE ALL INTERNAL INSULATION BUTTED JOINTS WITH SISALATION JOINT SEALING TAPE & FOLD ENDS UNDER.
- THE INSULATION TO BE LAMINATED WITH A PERFORATED FOIL.
- ALL FLANGES & BRACKETS TO BE GALVANISED.
- PAINT INSIDE OF REGISTER OPENINGS MATT BLACK.
- ALL SQ BENDS TO HAVE 100 NECK UNO.
- ALL RADIUS BENDS & TRANSITIONS TO HAVE 50 NECK UNO.
- THESE PLANS TO BE READ IN CONJUNCTION WITH THE ARCHITECTS & MECHANICAL CONSULTANTS PLANS & SPECIFICATIONS, ANY DISCREPANCY IS TO BE BROUGHT TO THE ATTENTION OF THE PROJECT MANAGER.

| | | | | | |
|---|---|--|---|---------------------------|------------------------|
| LEGEND BE BLANK END SU↔ SETUP IN DIRECTION OF AIR FLOW SD↔ SETDOWN IN DIRECTION OF AIR FLOW ET EQUAL TAPER FDT FLAT ON TOP FDB FLAT ON BOTTOM EAG EXHAUST AIR GRILLE RAG RETURN AIR GRILLE SAG SUPPLY AIR GRILLE US UNDER SIDE FS FAR SIDE VOLUME DAMPER ACCESS PANEL TYPE No. REGISTER TAG AHU-5 THERMOSTAT HUMIDISTAT DG DOOR GRILLE ROUND SPIGOT TAKE-OFF WITH BD HT. FROM F.F.L. TO U/S DUCT UNLESS NOTED OTHERWISE | NOTES ALL STRAIGHT DUCT LENGTHS TO BE 1400, UNLESS NOTED OTHERWISE ALL BOOTS TO BE 200L UNO. ALL DUCT OFFSETS / TRANSITIONS TO BE 750L UNLESS NOTED OTHERWISE ALL DUCTWORK SET UP & SET DOWN ARE TAKEN FROM BOTTOM TO BOTTOM OF DUCT | REFERENCE: ARCHITECTURAL - MECHANICAL - STRUCTURAL - PIECE NO'S - REGISTER NO'S - FIRE DAMPER NO'S - VOL. DAMPER NO'S - DO NOT SCALE DRAWING | PROJECT RETAIL & OFFICE DEVELOPMENT 454-456 FITZGERALD ST NORTH PERTH | SCALE - 1:50 | DRAWN - MN |
| | | | TITLE MECHANICAL SERVICES LEGEND & SCHEDULES | DATE - DEC 2017 | CHECKED - DS |
| NORTH | | 0 ISSUED FOR REVIEW REV DESCRIPTION BY DATE | MN 08/12/17 | | |

THIS DRAWING IS COPY RIGHT TO P.J & DE DOAK, DRAFTING



- NOTES**
1. ALL DUCT SIZES SHOWN ARE OVERALL SHEETMETAL SIZE.
 2. ALL DUCTING TO COMPLY WITH AS/NZ4254 & SMACNA.
 3. TAPE ALL INTERNAL INSULATION BUTTED JOINTS WITH SISALATION JOINT SEALING TAPE & FOLD ENDS UNDER.
 4. THE INSULATION TO BE LAMINATED WITH A PERFORATED FOIL.
 5. ALL FLANGES & BRACKETS TO BE GALVANISED.
 6. PAINT INSIDE OF REGISTER OPENINGS MATT BLACK.
 7. ALL SQ BENDS TO HAVE 100 NECK UNO.
 8. ALL RADIUS BENDS & TRANSITIONS TO HAVE 50 NECK UNO.
 9. THESE PLANS TO BE READ IN CONJUNCTION WITH THE ARCHITECTS & MECHANICAL CONSULTANTS PLANS & SPECIFICATIONS, ANY DISCREPANCY IS TO BE BROUGHT TO THE ATTENTION OF THE PROJECT MANAGER.

| LEGEND | | TYPE | No. | REGISTER TAG |
|--------|----------------------------------|--------|-----|--|
| BE | BLANK END | (R) | (L) | (L) |
| SU | SETUP IN DIRECTION OF AIR FLOW | (T) | | |
| SD | SETDOWN IN DIRECTION OF AIR FLOW | (H) | | |
| ET | EQUAL TAPER | (DG) | | |
| FOT | FLAT ON TOP | (S) | | |
| FOB | FLAT ON BOTTOM | (3000) | | |
| EAG | EXHAUST AIR GRILLE | (T) | | AHU-5THERMOSTAT |
| RAG | RETURN AIR GRILLE | (H) | | HUMIDISTAT |
| SAG | SUPPLY AIR GRILLE | (DG) | | DOOR GRILLE |
| US | UNDER SIDE | (S) | | ROUND SPIGOT TAKE-OFF WITH BD |
| FS | FAR SIDE | (3000) | | HT. FROM F.F.L. TO U/S DUCT UNLESS NOTED OTHERWISE |
| V | VOLUME DAMPER | | | |
| AP | ACCESS PANEL | | | |

NOTES

ALL STRAIGHT DUCT LENGTHS TO BE 1400L UNLESS NOTED OTHERWISE

ALL BOOTHS TO BE 200L UNO.

ALL DUCT OFFSETS / TRANSITIONS TO BE 750L UNLESS NOTED OTHERWISE

ALL DUCTWORK SET UP & SET DOWN ARE TAKEN FROM BOTTOM TO BOTTOM OF DUCT

NORTH

| REV | DESCRIPTION | BY | DATE |
|-----|-------------------|----|----------|
| 0 | ISSUED FOR REVIEW | MN | 08/12/17 |

REFERENCE:

ARCHITECTURAL - -

MECHANICAL - -

STRUCTURAL - -

PIECE NO'S - -

REGISTER NO'S - -

FIRE DAMPER NO'S - -

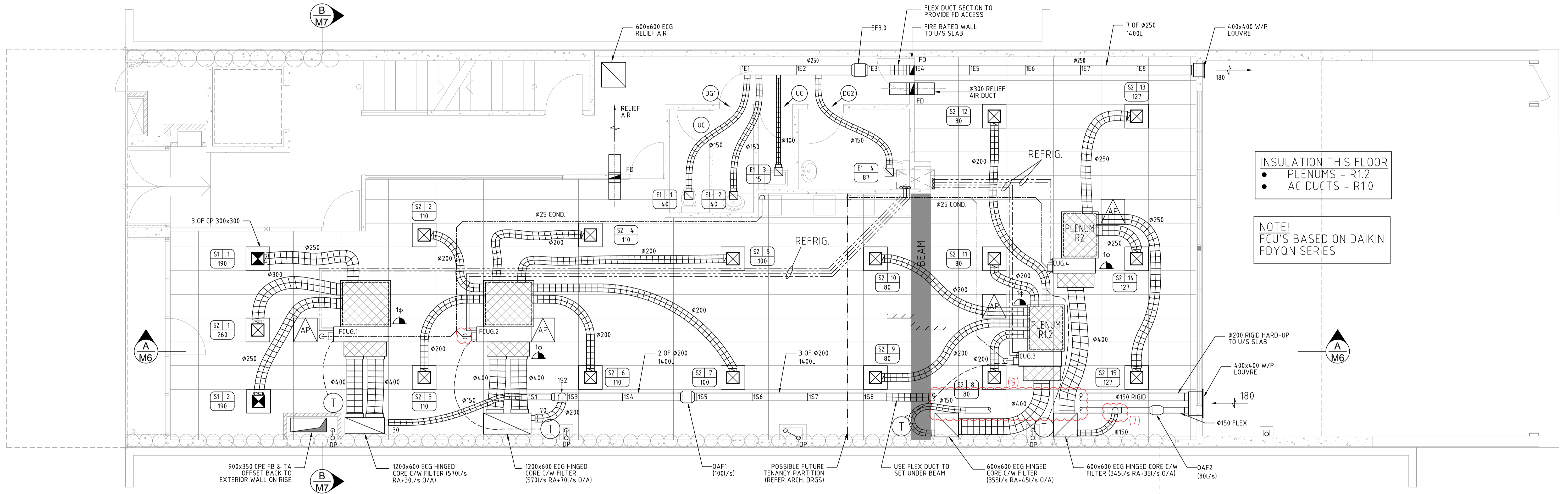
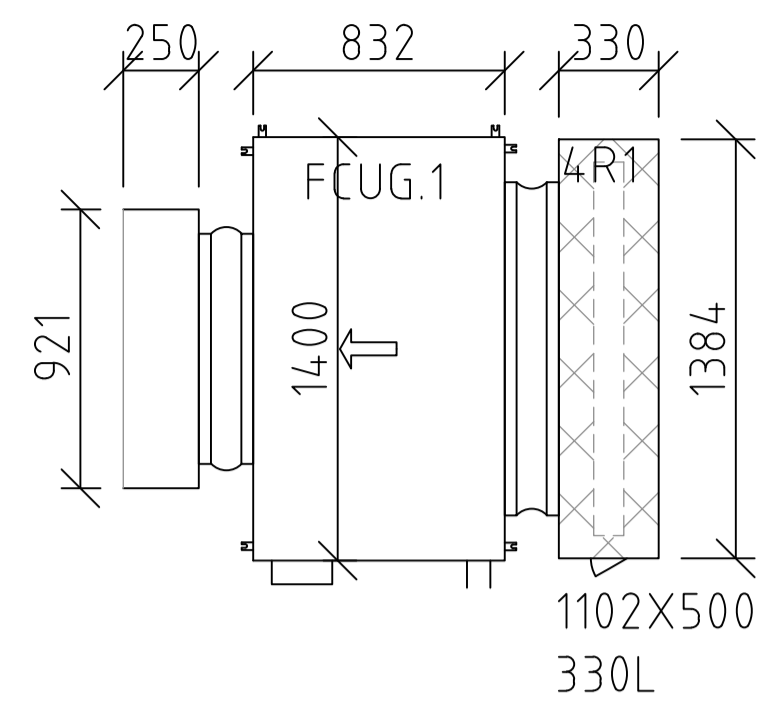
VOL DAMPER NO'S - -

DO NOT SCALE DRAWING

PROJECT
RETAIL & OFFICE DEVELOPMENT
454-456 FITZGERALD ST NORTH PERTH

TITLE
MECHANICAL SERVICES
BASEMENT FLOOR PLAN

| | | | |
|---------|----------|----------|----|
| SCALE- | 1:50 | DRAWN- | MN |
| DATE- | DEC 2017 | CHECKED- | DS |
| JOB No. | 140304 | | |
| DRG No. | M01 | REVISION | 0 |



INSULATION THIS FLOOR
 ● PLENUMS - R1.2
 ● AC DUCTS - R1.0

NOTE!
 FCU'S BASED ON DAIKIN
 FDYQN SERIES

900x350 CPE FB & TA OFFSET BACK TO EXTERIOR WALL ON RISE

1200x600 ECG HINGED CORE C/W FILTER (570L/s RA+30L/s O/A)

1200x600 ECG HINGED CORE C/W FILTER (570L/s RA+70L/s O/A)

OAF1 (100L/s)

POSSIBLE FUTURE TENANCY PARTITION (REFER ARCH. DRGS)

USE FLEX DUCT TO SET UNDER BEAM

600x600 ECG HINGED CORE C/W FILTER (355L/s RA+45L/s O/A)

600x600 ECG HINGED CORE C/W FILTER (345L/s RA+35L/s O/A)

OAF2 (80L/s)

| LEGEND | | REGISTER TAG | |
|--------|----------------------------------|--------------|--|
| BE | BLANK END | TYPE No. | REGISTER TAG |
| SUC | SETUP IN DIRECTION OF AIR FLOW | AR FLOW L/S | |
| SDC | SETDOWN IN DIRECTION OF AIR FLOW | AHU | STHERMOSTAT |
| ET | EQUAL TAPER | H | HUMIDISTAT |
| FOT | FLAT ON TOP | DG | DOOR GRILLE |
| FOB | FLAT ON BOTTOM | DP | ROUND SPIGOT TAKE-OFF WITH BD |
| | | 3000 | HT. FROM F.F.L. TO U/S DUCT UNLESS NOTED OTHERWISE |
| EAG | EXHAUST AIR GRILLE | | |
| RAG | RETURN AIR GRILLE | | |
| SAG | SUPPLY AIR GRILLE | | |
| US | UNDER SIDE | | |
| FS | FAR SIDE | | |
| | VOLUME DAMPER | | |
| AP | ACCESS PANEL | | |

NOTES

ALL STRAIGHT DUCT LENGTHS TO BE 1400L UNLESS NOTED OTHERWISE

ALL BOOTHS TO BE 200L U.N.O.

ALL DUCT OFFSETS / TRANSITIONS TO BE 750L UNLESS NOTED OTHERWISE

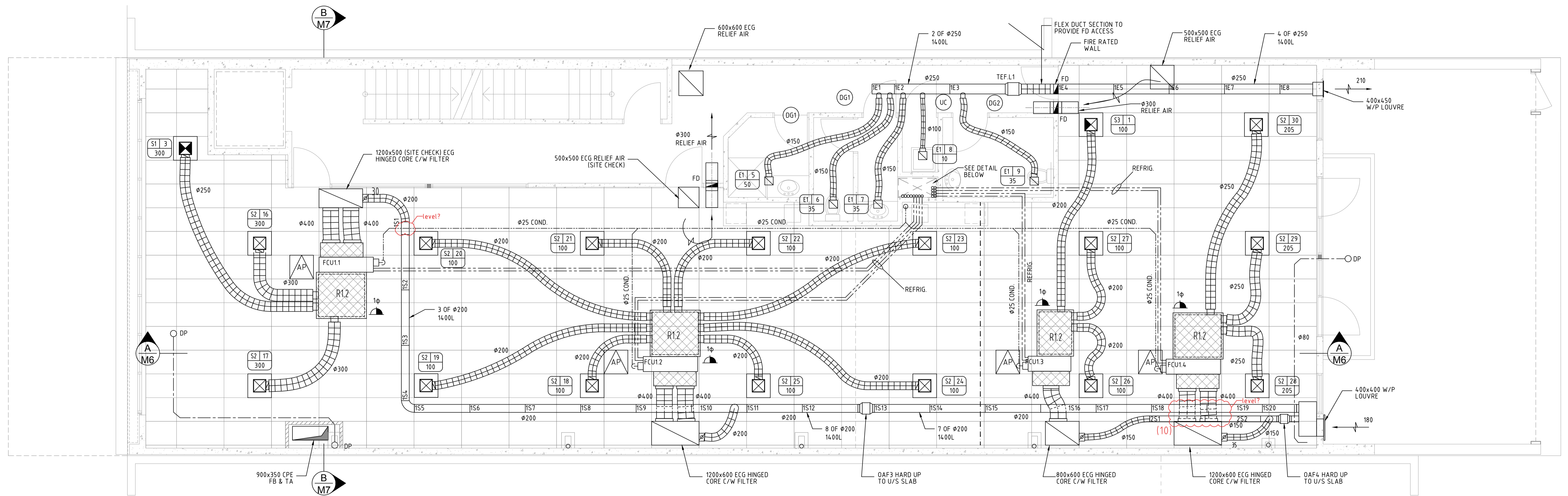
ALL DUCTWORK SET UP & SET DOWN ARE TAKEN FROM BOTTOM TO BOTTOM OF DUCT

| REV | DESCRIPTION | BY | DATE |
|-----|-------------------|----|----------|
| 0 | ISSUED FOR REVIEW | MN | 08/12/17 |

| REFERENCE: | |
|------------------|---|
| ARCHITECTURAL | - |
| MECHANICAL | - |
| STRUCTURAL | - |
| PIECE NO'S | - |
| REGISTER NO'S | - |
| FIRE DAMPER NO'S | - |
| VOL. DAMPER NO'S | - |

DO NOT SCALE DRAWING

| PROJECT | | SCALE | DRAWN |
|--|----------|----------|---------|
| RETAIL & OFFICE DEVELOPMENT 454-456 FITZGERALD ST NORTH PERTH | | 1:50 | MN |
| TITLE | | DATE | CHECKED |
| MECHANICAL SERVICES GROUND FLOOR PLAN | | DEC 2017 | DS |
| JOB No. | | 140304 | |
| DRG No. | REVISION | | |
| M02 | 0 | | |



LEGEND

| | | | | | |
|-----|----------------------------------|---------------|--------------------|--------------|--|
| BE | BLANK END | EAG | EXHAUST AIR GRILLE | TYPE No. | REGISTER TAG |
| SU | SETUP IN DIRECTION OF AIR FLOW | RAG | RETURN AIR GRILLE | AIR FLOW L/S | |
| SD | SETDOWN IN DIRECTION OF AIR FLOW | SAG | SUPPLY AIR GRILLE | AHU | 5-THERMOSTAT |
| ET | EQUAL TAPER | US | UNDER SIDE | H | HUMIDISTAT |
| FOT | FLAT ON TOP | FS | FAR SIDE | DG | DOOR GRILLE |
| FOB | FLAT ON BOTTOM | VOLUME DAMPER | | DG | ROUND SPIGOT TAKE-OFF WITH BD |
| | | AP | ACCESS PANEL | 3000 | HT. FROM F.F.L. TO U/S DUCT UNLESS NOTED OTHERWISE |

NOTES

ALL STRAIGHT DUCT LENGTHS TO BE 1400L UNLESS NOTED OTHERWISE

ALL BOOTHS TO BE 200L U.N.O.

ALL DUCT OFFSETS / TRANSITIONS TO BE 750L UNLESS NOTED OTHERWISE

ALL DUCTWORK SET UP & SET DOWN ARE TAKEN FROM BOTTOM TO BOTTOM OF DUCT

| | | | |
|-----|-------------------|----|----------|
| 0 | ISSUED FOR REVIEW | MN | 08/12/17 |
| REV | DESCRIPTION | BY | DATE |

REFERENCE:

| | |
|------------------|---|
| ARCHITECTURAL | - |
| MECHANICAL | - |
| STRUCTURAL | - |
| PIECE NO'S | - |
| REGISTER NO'S | - |
| FIRE DAMPER NO'S | - |
| VOL. DAMPER NO'S | - |

DO NOT SCALE DRAWING

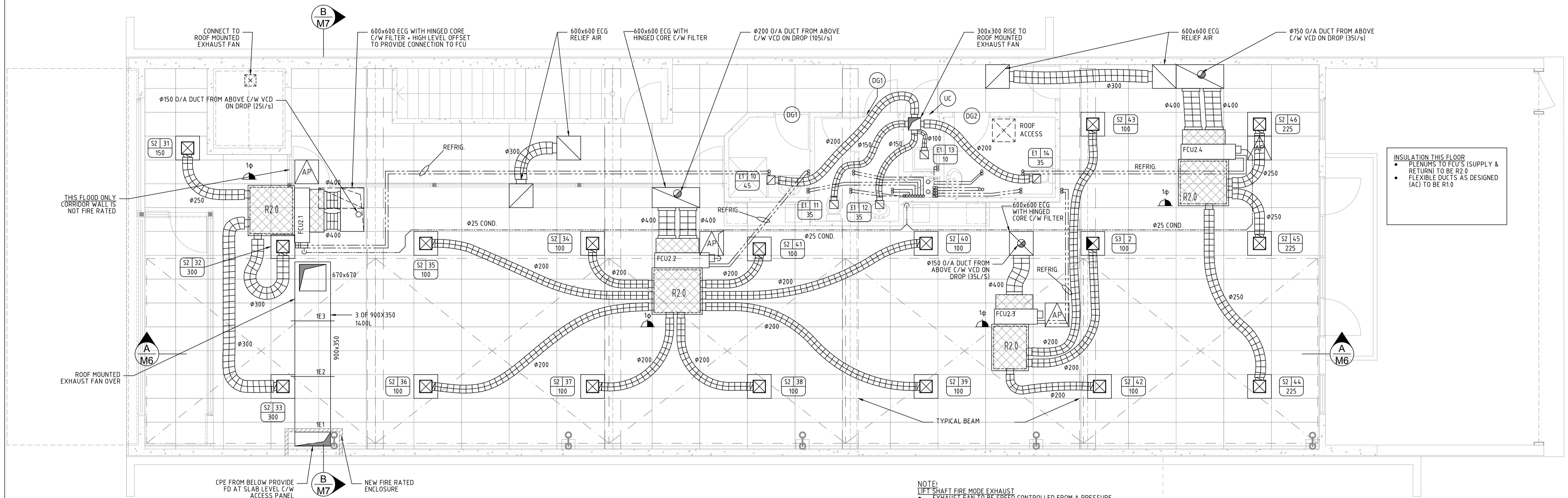
PROJECT

RETAIL & OFFICE DEVELOPMENT
454-456 FITZGERALD ST NORTH PERTH

TITLE

MECHANICAL SERVICES
FIRST FLOOR PLAN

| | | | |
|---------|----------|----------|----|
| SCALE- | 1:50 | DRAWN- | MN |
| DATE- | DEC 2017 | CHECKED- | DS |
| JOB No. | 140304 | | |
| DRG No. | M03 | REVISION | 0 |



INSULATION THIS FLOOR

- PLENUMS TO FCU'S (SUPPLY & RETURN) TO BE R2.0
- FLEXIBLE DUCTS AS DESIGNED (AC) TO BE R1.0

NOTE:
LIFT SHAFT FIRE MODE EXHAUST

- EXHAUST FAN TO BE SPEED CONTROLLED FROM A PRESSURE DIFFERENTIAL SWITCH SET AT 25pa BETWEEN SHAFT & CORRIDOR SPACE (1st FLOOR LEVEL)
- DESIGN INTENSION (ALTERNATIVE SOLUTION) IS TO PREVENT SMOKE FROM THE FIRE AFFECTED FLOOR ENTERING THE LIFT SHAFT AND THEN LEAKING SMOKE OUT INTO THE EGRESS ROUTES AT OTHER NON-FIRE AFFECTED FLOORS

| LEGEND | TYPE | No. | REGISTER TAG |
|--------|--|-----|--------------|
| BE | BLANK END | | |
| SU | SETUP IN DIRECTION OF AIR FLOW | | |
| SD | SETDOWN IN DIRECTION OF AIR FLOW | | |
| ET | EQUAL TAPER | | |
| FOT | FLAT ON TOP | | |
| FOB | FLAT ON BOTTOM | | |
| EAG | EXHAUST AIR GRILLE | | |
| RAG | RETURN AIR GRILLE | | |
| SAG | SUPPLY AIR GRILLE | | |
| US | UNDER SIDE | | |
| FS | FAR SIDE | | |
| FD | VOLUME DAMPER | | |
| AP | ACCESS PANEL | | |
| T | AHU-5thermostat | | |
| H | HUMIDISTAT | | |
| DG | DOOR GRILLE | | |
| DG | ROUND SPIGOT TAKE-OFF WITH BD | | |
| 3000 | HT. FROM F.F.L. TO U/S DUCT UNLESS NOTED OTHERWISE | | |

NOTES

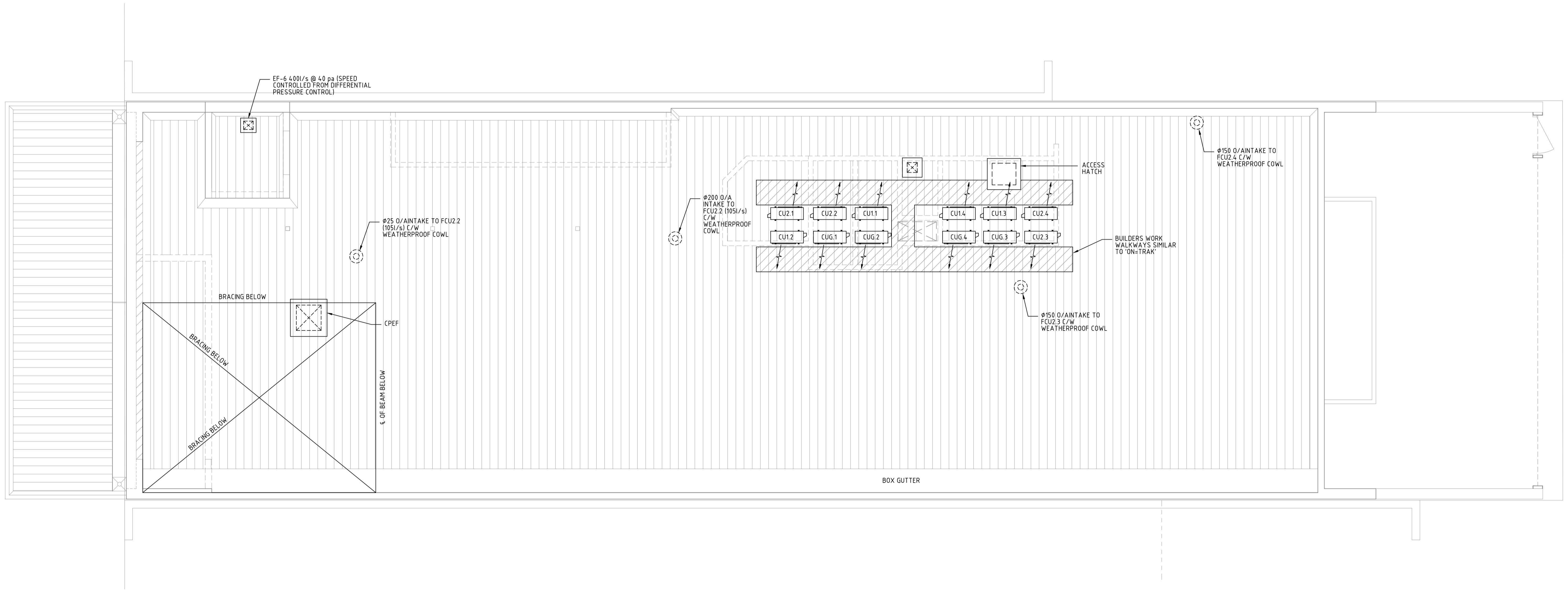
- ALL STRAIGHT DUCT LENGTHS TO BE 1400L UNLESS NOTED OTHERWISE
- ALL BOOTS TO BE 200L U.N.O.
- ALL DUCT OFFSETS / TRANSITIONS TO BE 750L UNLESS NOTED OTHERWISE
- ALL DUCTWORK SET UP & SET DOWN ARE TAKEN FROM BOTTOM TO BOTTOM OF DUCT

| REV | DESCRIPTION | BY | DATE |
|-----|-------------------|----|----------|
| 0 | ISSUED FOR REVIEW | MN | 08/12/17 |

| REFERENCE: | ARCHITECTURAL | MECHANICAL | STRUCTURAL | PIECE NO'S | REGISTER NO'S | FIRE DAMPER NO'S | VOL. DAMPER NO'S |
|------------|---------------|------------|------------|------------|---------------|------------------|------------------|
| | - | - | - | - | - | - | - |

DO NOT SCALE DRAWING

| | | | | | |
|---------|--|----------|------|----------|--------|
| PROJECT | RETAIL & OFFICE DEVELOPMENT 454-456 FITZGERALD ST NORTH PERTH | SCALE- | 1:50 | DRAWN- | MN |
| DATE- | DEC 2017 | CHECKED- | DS | JOB No. | 140304 |
| TITLE | MECHANICAL SERVICES SECOND FLOOR PLAN | DRG No. | M04 | REVISION | 0 |



| LEGEND | TYPE | No. | REGISTER TAG |
|------------------------------------|------|--|--------------|
| BE BLANK END | EA | EXHAUST AIR GRILLE | |
| SUC SETUP IN DIRECTION OF AIR FLOW | RA | RETURN AIR GRILLE | |
| SDC SETUP IN DIRECTION OF AIR FLOW | SAG | SUPPLY AIR GRILLE | |
| ET EQUAL TAPER | US | UNDER SIDE | |
| FOT FLAT ON TOP | FS | FAR SIDE | |
| FOB FLAT ON BOTTOM | FD | FAR SIDE | |
| | VD | VOLUME DAMPER | |
| | AP | ACCESS PANEL | |
| | T | AHU-5THERMOSTAT | |
| | H | HUMIDISTAT | |
| | DG | DOOR GRILLE | |
| | DS | ROUND SPIGOT TAKE-OFF WITH BD | |
| | 3000 | HT. FROM F.F.L. TO U/S DUCT UNLESS NOTED OTHERWISE | |

NOTES

ALL STRAIGHT DUCT LENGTHS TO BE 1400L UNLESS NOTED OTHERWISE

ALL BOOTHS TO BE 200L U.N.O.

ALL DUCT OFFSETS / TRANSITIONS TO BE 750L UNLESS NOTED OTHERWISE

ALL DUCTWORK SET UP & SET DOWN ARE TAKEN FROM BOTTOM TO BOTTOM OF DUCT

| REV | DESCRIPTION | BY | DATE |
|-----|-------------------|----|----------|
| 0 | ISSUED FOR REVIEW | MN | 08/12/17 |

| REFERENCE: | |
|------------------|---|
| ARCHITECTURAL | - |
| MECHANICAL | - |
| STRUCTURAL | - |
| PIECE NO'S | - |
| REGISTER NO'S | - |
| FIRE DAMPER NO'S | - |
| VOL. DAMPER NO'S | - |

DO NOT SCALE DRAWING

| PROJECT | SCALE | DRAWN |
|--|----------|----------|
| RETAIL & OFFICE DEVELOPMENT 454-456 FITZGERALD ST NORTH PERTH | 1:50 | MN |
| TITLE | DATE | CHECKED |
| MECHANICAL SERVICES ROOF PLAN | DEC 2017 | DS |
| JOB No. | 140304 | |
| DRG No. | M05 | REVISION |
| | | 0 |