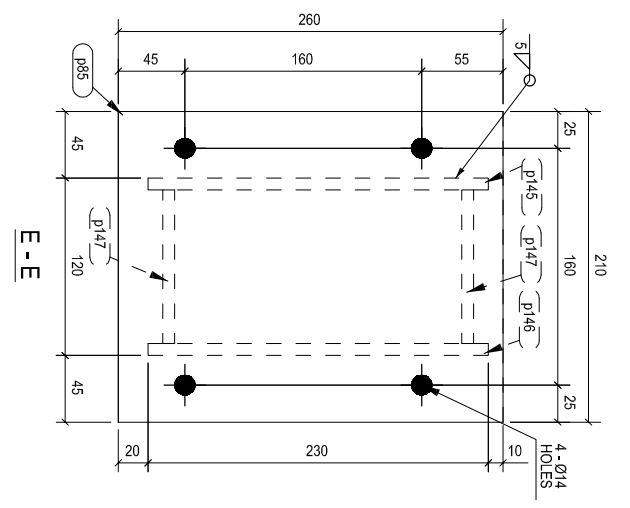
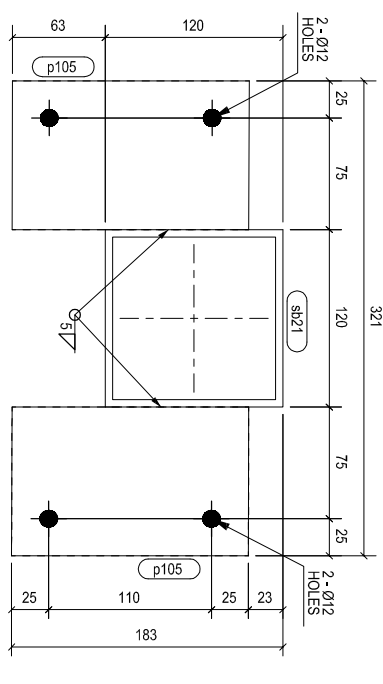
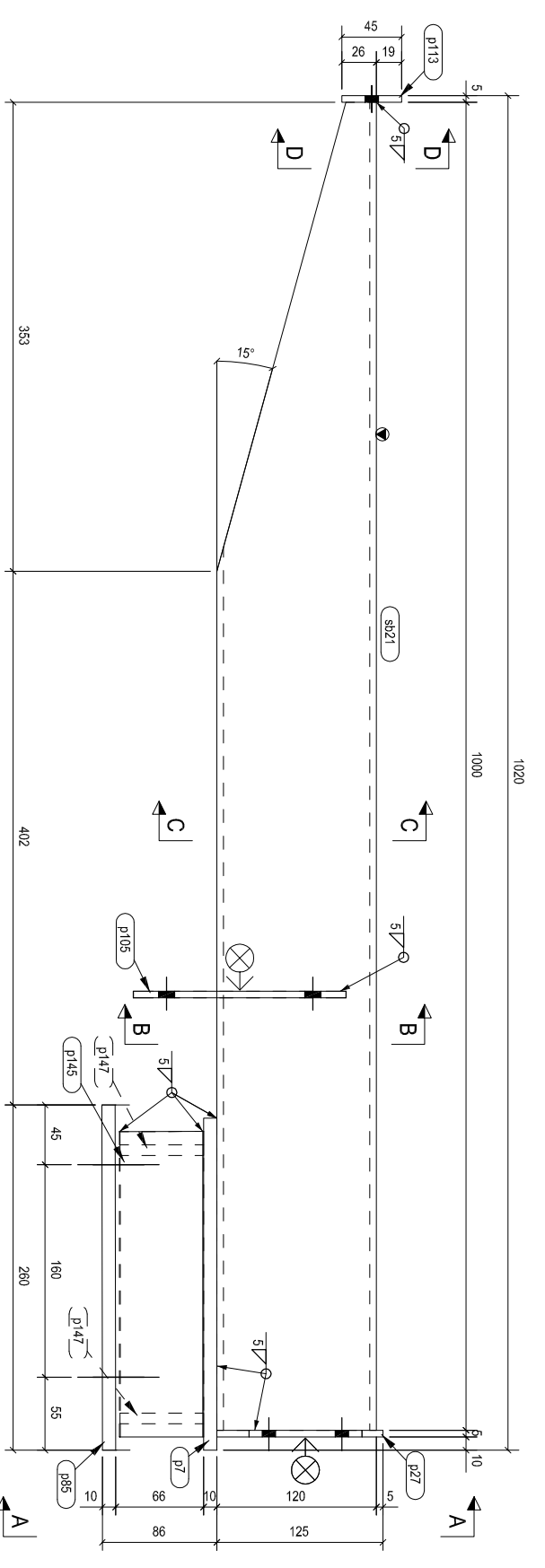
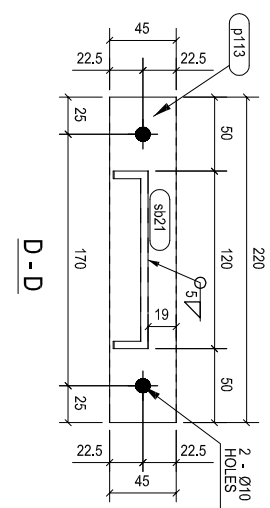
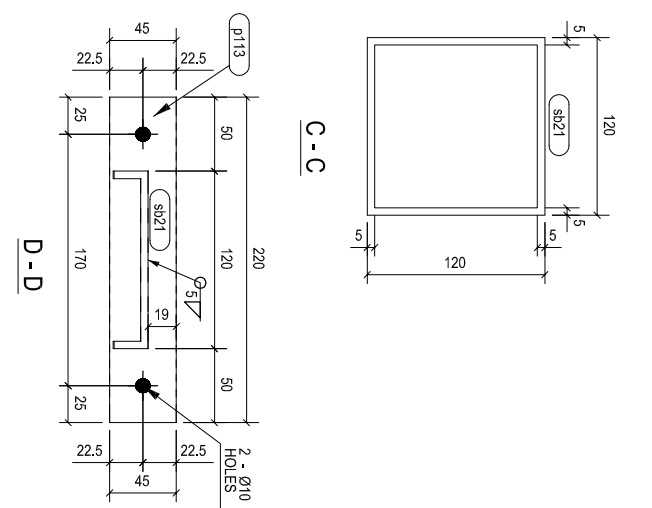
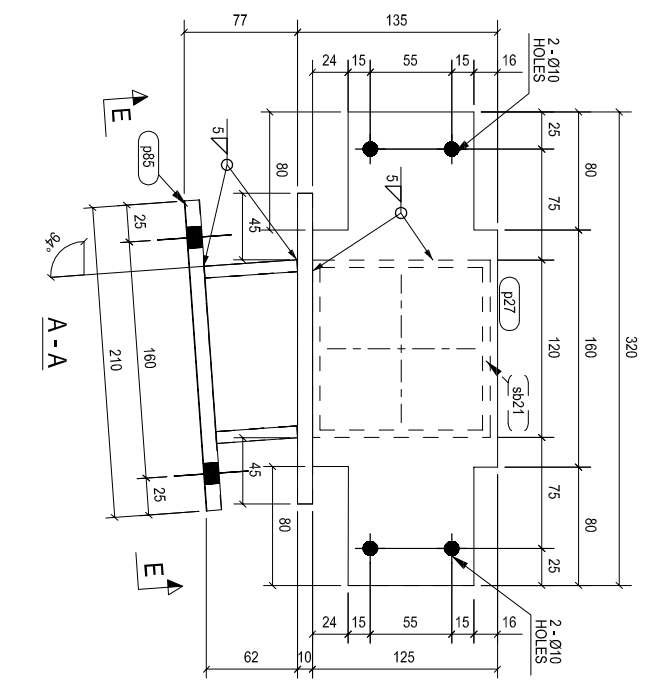
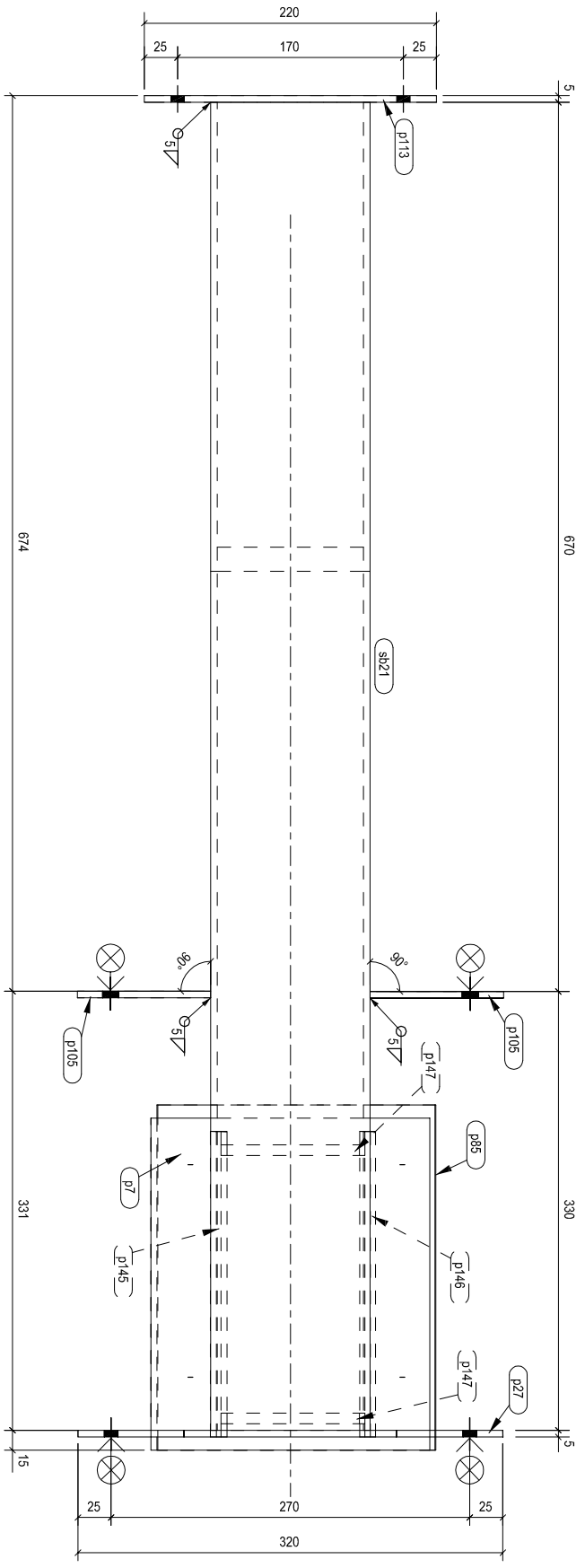
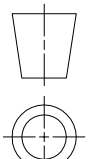


DELIVERY TO:
SITE



LEGEND:
 = CONNECTING SIDE MARK
 = ORIENTATION MARK

STEEL	CUTTING TOL.: +/- 1mm	ACCU. TOL.: +/- 1mm	FAB. TOL.: +/- 1mm
ALUM.	CUTTING TOL.: +/- 0.5mm	ACCU. TOL.: +/- 0.5mm	FAB. TOL.: +/- 0.5mm

QTY. :	1	MATERIAL :	EN10210 S355J0H OR ABOVE	FINISH :	HOT DIP GALV.	WEIGHT :	29.1 KGS
LOCATION :		DRAWN :		CHECKED :		SCALE :	1:5

NO.	NAME	PARTS	QTY.	UNIT	LENGTH (mm)	REMARK
1	sb21	SHS120*120*5.0	1	NOS.	1000	
2	p147	PLT8*63	2	NOS.	104	
3	p146	FLT8*55	1	NOS.	230	
4	p145	PLT8*63	1	NOS.	230	
5	p113	FLT5*45	1	NOS.	220	
6	p105	PL5*100.4	2	NOS.	160	
7	p85	PLT10*210	1	NOS.	260	
8	p27	PL5*125	1	NOS.	320	
9	p7	FLT10*250	1	NOS.	210	

PROJECT NAME:	MIDFIELD CONCOURSE FIXED LINK BRIDGES FACADE PACKAGE FLB 09(TYPE K)	PROJECT NO.:	E2075
SHOP DRAWING REF.:	E2075-FLB-K-09-RSMK01	DWG No.:	E2075-FLB- K-09-SBS1
ERECTOR DRAWING REF.:		ITEM / PART NO.:	K-09-SBS1
REV	A		